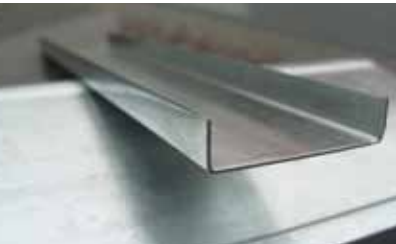
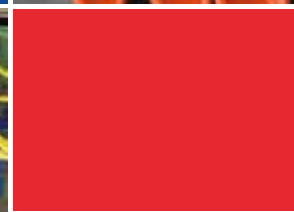




# LINDA TUBE

Manufacturing & Metal Processing





# Company Profile

## LINDA TUBE

### Manufacturing & Metal Processing

Linda Tube, established in 1998 has been providing customers with the highest quality Steel Tube/Pipe at a competitive value. Whatever the end application might require, we work with the customers to deliver their exact requirements.

LINDA TUBE is a producer and trader of steel tube/pipe for all different applications.

With seven mills located in seven plants in the 10th of Ramadan and suez industrial city, we have managed to respond to local and international customers demands with the shortest lead time possible thus eliminating the need for customer's investments in inventory.

Linda Tube's team emphasizes long term business relation, thus we have committed ourselves to put the extra effort to assure that our customers are fully satisfied with our products and business dealings.

Linda Tube obtained the ISO 9001:2008 certificate and adopt the standards EN10255 and ASTM A53 Gr A/B

#### Mission

Linda Tube's mission is to provide its customers with a high quality product at a competitive value to increase the returns on the customer's investments through better total efficiency, by helping them:

- Increase their efficiency and reduce costs
- Increase their company's productivity and profitability
- Provide better customer service
- Faster delivery of products with minimal to no lead time

#### Vision

- Linda Tube understands that continuous improvement is an important factor in the steel industry. The company must remain flexible and committed to change, improvement and better efficiencies.
- Linda Tube recognizes that a reasonable profit with mass production is necessary for financial stability and growth in the 21st Century. The company has to rapidly expand its capability and add new services within its line of work.
- Grow technically and geographically into a worldwide, world renowned manufacturer.
- Constant updating of its managing techniques and equipment with high quality materials for consistently high standards in the industry. The management of the company are always glad to receive any business proposals from other organizations and look forward to a fruitful co-operation.

بدأت شركة ليندا في مجال الصناعة والتجارة عام 1980 م في مجال المصنوعات الحديدية وفي عام 1998 اجهت إلى مجال تصنيع المواسير الصلب الملحومة طوليا بمقاسات تصل إلى 4 بوصة مستديرة ومستطيلة ومربعة والتي تستخدم في مجالات عديدة حيث تمتلك الشركة عدد 7 مصانع وتم تصدير المنتج للخارج حيث يتمتع بسمعة حسنة داخل وخارج مصر نظرا للجودة العالية.

ولاهمية المنتج المستخدم وضرورة الوصول لأعلي جودة سعت الشركة للحصول علي شهادات اعتماد المنتج وخطوات الانتاج من مؤسسات عالمية متخصصة (SGS ) ومنها شهادة الايزو 9001-2008 واعتماد المواصفة المستخدمة EN10255 وكذلك ASTM A53 Gr A

#### رسالة الشركة:

ان رسالة شركتنا هي امداد العملاء بمنتج عالي الجودة وبقيمة تنافسية وذلك لزيادة ارباح استثمارات العملاء من خلال تحسين الكفاءة كليا بمساعدتهم علي:

- زيادة الكفاءة وتقليل التكاليف والاعباء للعملاء.
- زيادة القدرة الانتاجية والربحية للعملاء.
- تقديم خدمة أفضل للعملاء.
- تسليم المنتجات في وقت قياسي للعملاء.

#### رؤيه الشركة:

- شركة ليندا علي دراية تامة بأن التطوير المستمر هو عامل أساسي في الصناعات الحديدية
- والشركة ملتزمة بالمرونة و التغيير والتطوير والتحسين ورفع الكفاءة .
- تؤمن الشركة بمبدأ ربح معقول مع انتاج ضخم هو شرط اساسي من أجل الاستقرار المالي والنمو في القرن ال 21
- ولقد توسعت الشركة بصورة سريعة وازافت الكثير من الخدمات في مجال عملها.
- التطور فنيا وجغرافيا والانفتاح علي العالم يجعلها من اشهر المصنعين في العالم.
- التحديث المستمر في اساليب الادارة وتشغيل المعدات باستخدام خامات ذات جودة عالية هو شرط الوصول الي معايير عالية الجودة في هذا المجال.
- نحن دائما سعداء باستقبال عروض اعمال من المؤسسات الاخرى و نتطلع الي تعاون مثمر.



**Our Products and Services**

منتجات الشركة وخدماتها

**Round Pipe**

المواسير المستديرة

OD	Wall Thickness (mm)																			
	mm	1.2	1.3	1.4	1.5	1.7	1.8	2.0	2.3	2.5	2.7	3.0	3.2	3.3	3.5	4	4.5	5	6	
1/2	21.3																			
3/4	26.6																			
1	33.4																			
1 1/4	42.4																			
1 1/2	48.3																			
2	60.3																			
3	88.9																			
4	114.3																			

Available in HR, CR, P&O.  
Different length is available according to customer requirements.



**Round Structural Tube**

المواسير المستديرة

OD	Wall Thickness (mm)																				
	mm	0.6	0.7	0.8	0.9	1.0	1.2	1.3	1.4	1.5	1.65	1.7	1.8	2.0	2.3	2.4	2.5	3.0	3.4	4.0	
12																					
14																					
16																					
19																					
20																					
22																					
25(25.4)																					
27																					
32																					
38																					
42																					
45																					
48																					
50																					
60																					

Available in HR, CR, P&O.  
Different length is available according to customer requirements.



**Square Structural Tube**

المواسير المربعة

Size	Wall Thickness (mm)															
mm	0.7	0.8	0.9	1.0	1.2	1.3	1.4	1.5	1.6	1.7	1.8	2.0	2.3	2.4	2.5	3.0
18*18																
20*20																
25*25																
30*30																
38*38																
40*40																
48*48																
50*50																
70*70																
90*90																

Available in HR, CR, P&O.  
Different length is available according to customer requirements



**Rectangle Structural Tube**

المواسير المستطيلة

Size	Wall Thickness (mm)															
mm	0.6	0.7	0.8	0.9	1	1.2	1.3	1.4	1.5	1.65	1.7	1.8	2.0	2.3	2.4	2.5
10*20																
15*20																
20*30																
20*40																
25*50																
28*50																
30*50																
38*60																
40*60																
40*70																
50*90																
40*100																

Available in HR, CR, P&O.  
Different length is available according to customer requirements



## Slitting

تنشريح لفائف الصاج

Steel coil slitting capabilities:

- Thickness from 0.3 mm up to 7 mm.
- Coil width up to 1500 mm
- Coil weight up to 23 Tons.

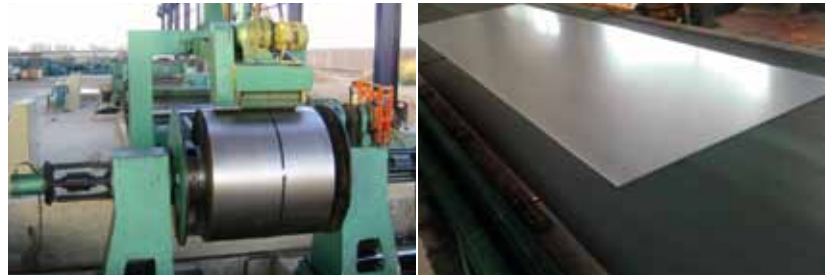


## Cut-to-Length

تقطيع الصاج

Steel coil Cut-to-Length capabilities:

- Thickness from 0.3mm to 3mm
- Coil width up to 1300 mm
- Coil weight up to 15 ton
- Length according to customer request.



## Tube Cut-to-Length

تقطيع المواسير

Cuttig line Capabilities:

- High tolerance tube and pipe cut to length from 50mm to 200mm.
- Round pipes from 10mm to 76mm.
- Square pipes from 15×15mm to 70×70mm.



## Corrugated sheet

الصاج المعرج

Corrugated sheet line according to customer length and thickness requirements.



**Pickling line**

تخليط لفائف الصاج

Steel coil pickling capabilities :

- Thickness from 1 mm to 4mm
- Coil width up to 1450 mm
- Coil weight up to 25 ton

**Before Pickling**



**After Pickling**



**Steel Wire Drawing**

سحب السلك

Steel wire capabilities :

- Coil thickness from 3mm to 7mm.
- Cut to length form 200mm to 4000mm



**K Span Machine**

Fabrication for K span and super k span according to customer design



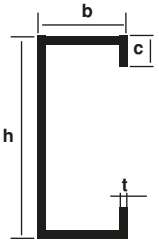
**Scaffolding**

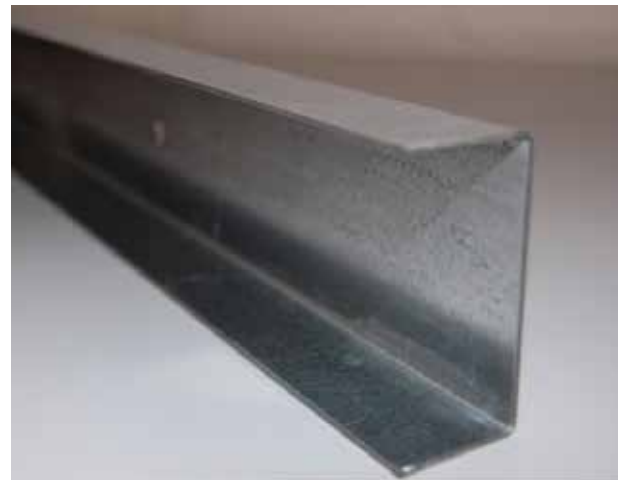
السقالات


OD	Wall Thickness (mm)																	
Inch	mm	1.2	1.3	1.4	1.5	1.7	1.8	2.0	2.3	2.5	2.7	3.0	3.2	3.3	3.5	4	5	6
3/4	26.6																	
1 1/2	48.3																	



U channel line with productivity according to customer requirements in length and thickness With the following standards.

Usage: shape purlin	Model	Section Size			
		h(mm)	b(mm)	c(mm)	t(mm)
	C80	80	40	15	2.0-2.5
	C100	100	40	20	2.0-3.0
	C100	100	50	20	2.0-3.0
	C120	120	50	20	2.0-3.0
	C120	120	60	20	2.0-3.0
	C140	140	50	20	2.0-3.0
	C140	140	60	20	2.0-3.0
	C160	160	60	20	2.0-3.0
	C160	160	70	20	2.0-3.0
	C180	180	60	20	2.0-3.0
	C180	180	70	20	2.0-3.0
	C200	200	60	20	2.0-3.0
	C200	200	70	20	2.0-3.0
	C220	220	70	20	2.0-3.0
	C220	220	80	20	2.0-3.0
	C240	240	70	20	2.0-3.0
	C240	240	80	20	2.0-3.0
	C250	250	80	20	2.0-3.0
	C260	260	80	20	2.0-3.0
	C280	280	100	20	2.0-3.0
C300	300	100	20	2.0-3.0	
C320	320	100	20	2.0-3.0	
C340	340	100	20	2.0-3.0	
C360	360	100	20	2.0-3.0	



	(A)	(B)
	180	60
	160	60
	140	55
	120	50
	100	45
	80	40



**Round pipe ( ASTM A53 GR-A / B)**

**انتاج المواسير طبقا للمواصفة القياسية ASTM A53 GR-A / B**

Linda is a leader in the production of pipes welded longitudinally at the level of the Republic at all stages of production where pipes are produced in accordance with ASTM A53 GR-A / B diameters from inch to 12 inches and the production stages are:

تعتبر شركة ليندا رائدة من حيث عدد خطوط انتاج المواسير الملحومة طوليا علي مستوي الجمهورية بجميع مراحل الانتاج حيث يتم انتاج المواسير طبقا للمواصفة القياسية ASTM A53 GR-A / B أقطار من ½ بوصة الى 12 بوصة وتكون مراحل الانتاج عبارة عن:

**SPECIFICATION FOR STANDARD SIZES  
ASTM A53 GR-B SCHEDULE- 40 FOR  
BLACK AND HOT DIP GALVANIZED STEEL PIPES**

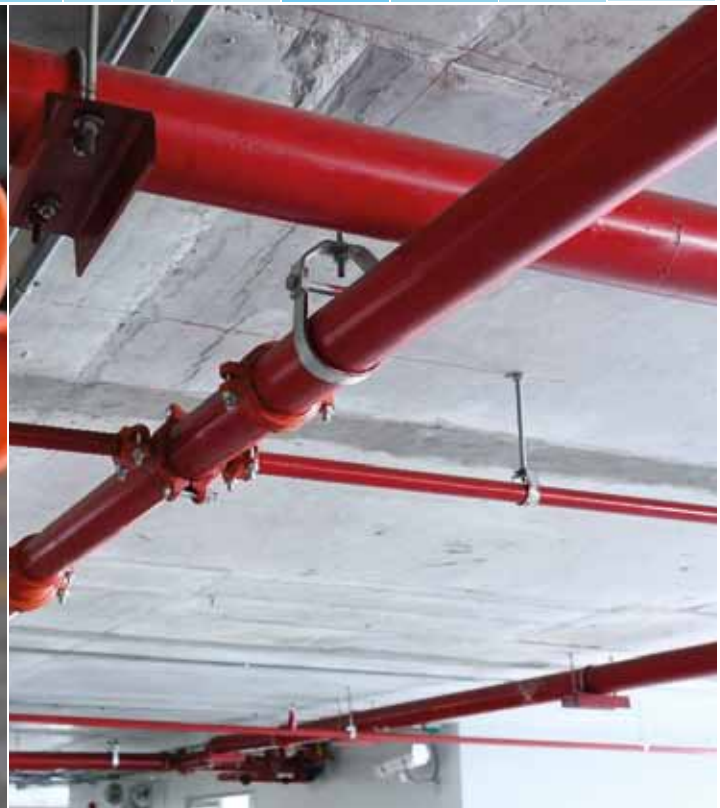
Size		OD (Minimum)		OD (Maximum)		WALL THICKNESS		Weight of Tube. (Plain End)		PRESSUR	Weight of tube(SS)		Pieces Per bundle
INCH	NB(mm)	INCH	MM	INCH	MM	INCH	MM	IB./FT.	Kg./Mtr	Psi	lb./FT.	Kg./Mtr	
1/2"	15	0.822	20.90	0.845	21.70	0.109	2.77	0.850	1.27	700	0.860	1.27	120
3/4"	20	1.035	26.30	1.070	27.10	0.113	2.87	1.130	1.69	700	1.140	1.69	84
1"	25	1.300	33.00	1.330	33.80	0.133	3.38	1.680	2.50	700	1.690	2.50	60
1 1/4"	32	1.645	41.80	1.680	42.60	0.140	3.56	2.270	3.39	1300	2.280	3.40	42
1 1/2"	40	1.885	47.90	1.920	48.70	0.145	3.68	2.720	4.05	1300	2.740	4.04	36
2"	50	2.350	59.70	2.400	60.90	0.154	3.91	3.660	5.44	2500	3.680	5.46	26
2 1/2"	65	2.850	72.30	2.900	73.70	0.203	5.16	5.800	8.63	2500	5.850	8.67	18
3"	80	3.460	88.00	3.530	89.80	0.216	5.49	7.580	11.29	2500	7.680	11.35	14
3 1/2"	90	3.960	100.60	4.040	102.60	0.226	5.74	9.120	13.57	2370	9.270	13.71	12
4"	100	4.450	113.20	4.540	115.40	0.237	6.02	10.800	16.07	2210	10.920	16.23	10
5"	125	5.507	139.90	5.620	142.70	0.258	6.55	14.630	21.77	1950	14.900	22.07	7
6"	150	6.560	166.60	6.690	169.98	0.280	7.11	18.990	28.26	1780	19.340	28.58	7
8"	200	8.562	217.50	8.70	221.00	0.322	8.18	28.58	42.55	1570	-----	-----	4
10"	250	10.669	271.00	10.826	275.00	0.365	9.27	40.52	60.29	1430	-----	-----	4
12"	300	12.637	321.00	12.854	326.50	0.406	10.31	53.57	79.70	1340	-----	-----	2





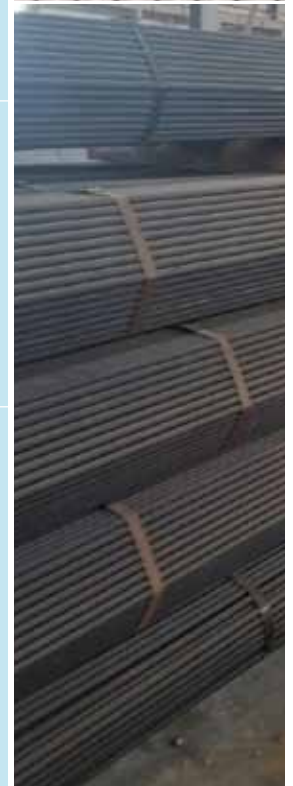
**SPECIFICATION FOR STANDARD SIZES  
ASTM A135 GR-A / B SCHEDULE- 40 FOR  
BLACK AND HOT DIP GALVANIZED STEEL PIPES**

Size		OD (Minimum)		OD (Maximum)		WALL THICKNESS		Weight of Tube. (Plain End)		PRESSUR GR-A	PRESSUR GR-B	Pieces
INCH	NB(mm)	INCH	MM	INCH	MM	INCH	MM	IB./FT.	Kg./Mtr	Psi	Psi	
3/4"	20	1.040	26.43	1.061	26.79	0.083	2.11	0.860	1.28	2500	2500	120
1"	25	1.300	33.07	1.330	33.73	0.109	2.77	1.410	2.09	2500	2500	84
1 1/4"	32	1.645	41.78	1.680	42.62	0.109	2.77	1.180	2.69	2400	2500	61
1 1/2"	40	1.885	47.82	1.920	48.70	0.109	2.77	2.09	3.11	2100	2400	42
2"	50	2.350	59.70	2.400	60.90	0.109	2.77	2.640	3.39	1700	1900	3
2 1/2"	65	2.850	72.30	2.900	73.70	0.120	3.05	3.530	5.26	1500	1700	29
3"	80	3.460	88.00	3.530	89.80	0.120	3.05	4.340	6.46	1200	1400	1
3 1/2"	90	3.960	100.60	4.040	102.60	0.120	3.05	4.800	7.41	1000	1200	1
4"	100	4.450	113.20	4.540	115.40	0.120	3.05	5.620	8.37	900	1100	14
5"	125	5.507	139.90	5.620	142.70	0.134	3.40	7.780	11.58	850	1000	7
6"	150	6.560	166.60	6.690	169.98	0.134	3.40	9.300	13.83	728	848	7



**SPECIFICATION FOR STANDARD SIZES EN 10255:2004 FOR BLACK AND HOT DIP GALVANIZED STEEL PIPES.**

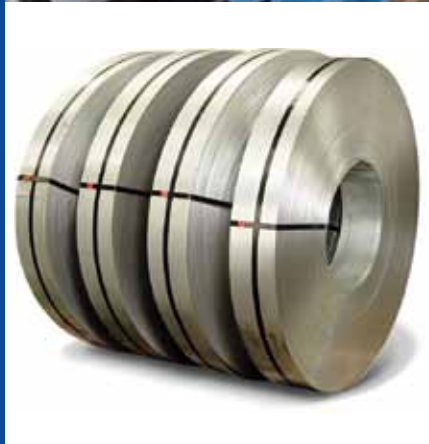
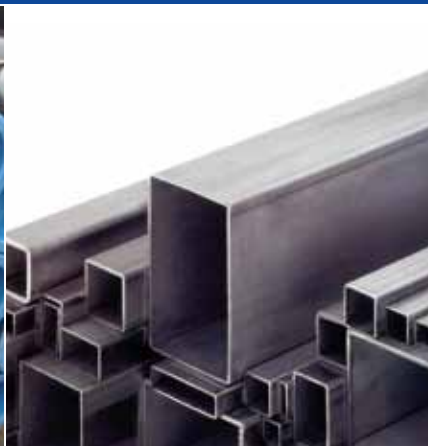
Tube	Size		OD (SPECIFIED)		WALL THICKNESS	Weight of Tube(Kg/mTR)		PRESSUR
	INCH	NB(mm)	MIN	MAX	(mm)	BLACK	S/S	BAR
T Y P E . L	1/2"	15	21.0	21.7	2.3	1.08	1.09	50
	3/4"	20	26.4	27.1	2.3	1.40	1.41	50
	1"	25	33.2	34.0	2.9	2.20	2.22	50
	1 1/4"	32	41.9	42.7	2.9	2.82	2.85	50
	1 1/2"	40	47.8	48.6	2.9	3.25	3.29	50
	2"	50	59.6	60.7	3.2	4.51	4.58	50
	2 1/2"	65	75.2	76.0	3.2	5.75	5.87	50
	3"	80	87.9	88.7	3.2	6.76	6.93	50
	3 1/2"	90	100.3	101.2	3.6	8.70	8.88	50
	4"	100	113.0	113.9	3.6	9.83	10.10	50
T Y P E . L1	5"	125	138.5	140.8	4.5	15.00	15.50	50
	6"	150	163.9	166.5	4.5	17.80	18.40	50
	1/2"	15	21.0	21.7	2.3	1.08	1.09	50
	3/4"	20	26.4	27.1	2.3	1.39	1.40	50
	1"	25	33.2	34.0	2.9	2.20	2.22	50
	1 1/4"	32	41.9	42.7	2.9	2.82	2.85	50
	1 1/2"	40	47.8	48.6	2.9	3.24	3.28	50
	2"	50	59.6	60.7	3.2	4.49	4.56	50
T Y P E . L2	2 1/2"	65	75.2	76.3	3.2	5.73	5.85	50
	3"	80	87.9	89.4	3.6	7.55	7.72	50
	4"	100	113.0	114.9	4.0	10.80	11.10	50
	1/2"	15	21.0	21.4	2.0	0.947	0.956	50
	3/4"	20	26.4	26.9	2.3	1.380	1.390	50
	1"	25	33.2	33.8	2.6	1.980	2.000	50
	1 1/4"	32	41.9	42.5	2.6	2.540	2.570	50
	1 1/2"	40	47.8	48.4	2.9	3.230	3.270	50
M E D I U M	2"	50	59.6	60.2	2.9	4.080	4.150	50
	2 1/2"	65	75.2	76.0	3.2	5.710	5.830	50
	3"	80	87.9	88.7	3.2	6.720	6.890	50
	4"	100	113.0	113.9	3.6	9.750	10.000	50
	1/2"	15	21.1	21.8	2.6	1.21	1.22	50
	3/4"	20	26.5	27.3	2.6	1.56	1.57	50
	1"	25	33.3	34.2	3.2	2.41	2.43	50
	1 1/4"	32	42.0	42.9	3.2	3.10	3.13	50
	1 1/2"	40	47.9	48.8	3.2	3.56	3.60	50
	2"	50	59.7	60.8	3.6	5.03	5.10	50
2 1/2"	65	75.3	76.6	3.6	6.42	6.54	50	
3"	80	88.0	89.5	4.0	8.36	8.53	50	
4"	100	113.1	115.0	4.5	12.20	12.50	50	
5"	125	138.5	140.8	5.0	16.60	17.10	50	
6"	150	163.9	166.5	5.0	19.80	20.40	50	





# LINDA TUBE

Manufacturing & Metal Processing





# LINDA TUBE

Manufacturing & Metal Processing



Tube Manufacturing & Metal Processing

## EGYPT.

**Address** : 44 Burg Al Hana, #62, Madinet Al Zahra,  
Helmet Al Zayton, Cairo, Egypt.

**Phones (Head Office)** : (+202) 26428815 / 26429025 / 26433103  
**(Plants)** : (055) 4413270 / 413430 / 4501107 / 4501108  
4332199 / 4332448 / 4412432

**Fax** : (+202) 26396169  
**Mobile** : 01000081757  
**E-mail** : sales@linda.com.eg  
**Website** : www.linda.com.eg

## MOROCCO .

**Address** : Linda Tube S.a.r.l  
Lot 91, CFCIM PARC Industrial  
de Bouskoura, Casablanca , Morocco.

**Phones** : (+212) 660029221